

Introduction to ASO

ALLELE –SPECIFIC OLIGONUCLEOTIDE (ASO)
HYBRIDISATION
IN DETECTING THE SICKLE CELL MUTATION

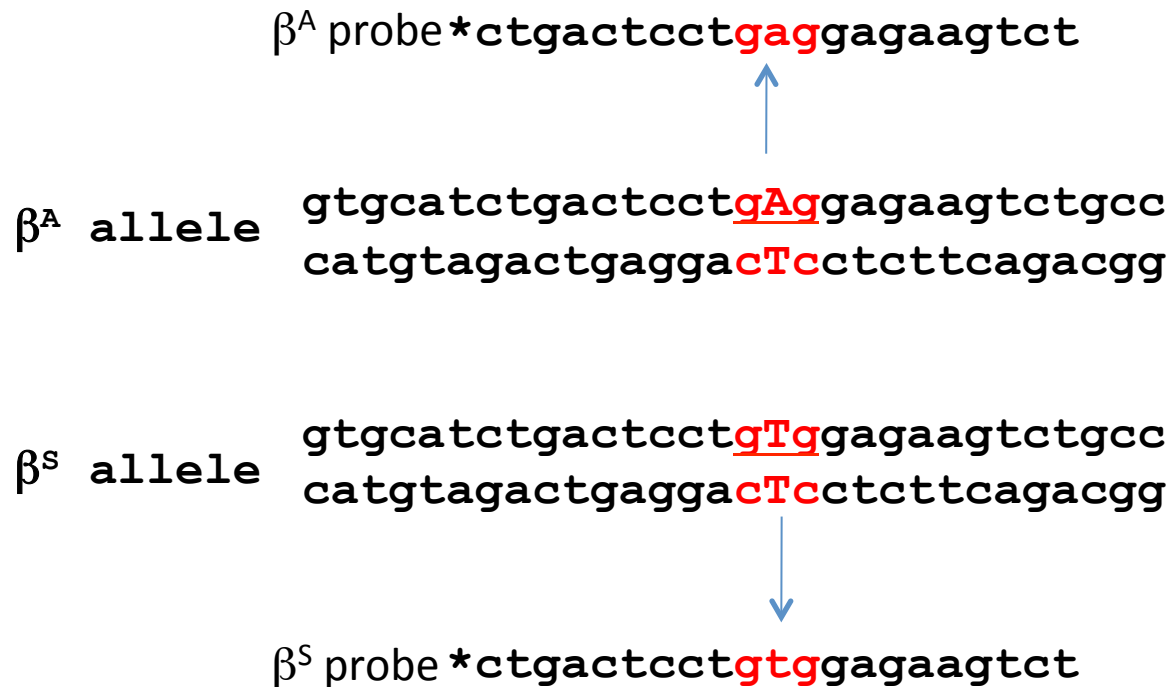


De Montfort University
Leicester, UK

SICKLE CELL ANAEMIA
OPEN EDUCATIONAL RESOURCES FOR
SICKLE CELL ANAEMIA AND THALASSEMIA

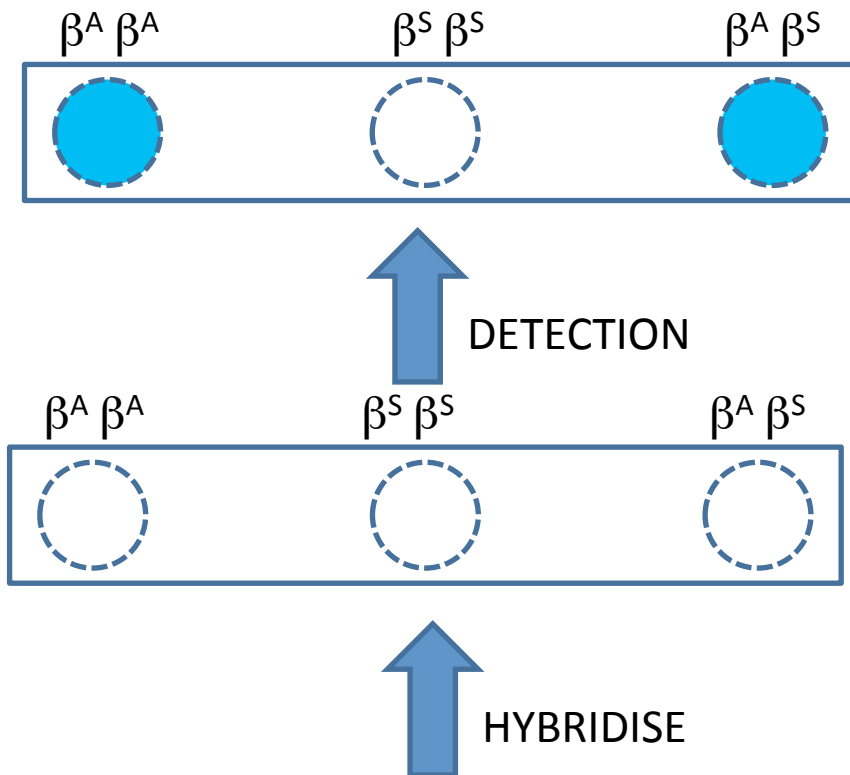
ASO Hybridisation

ALLELE –SPECIFIC OLIGONUCLEOTIDE (ASO) HYBRIDISATION IN DETECTING THE SICKLE CELL MUTATION

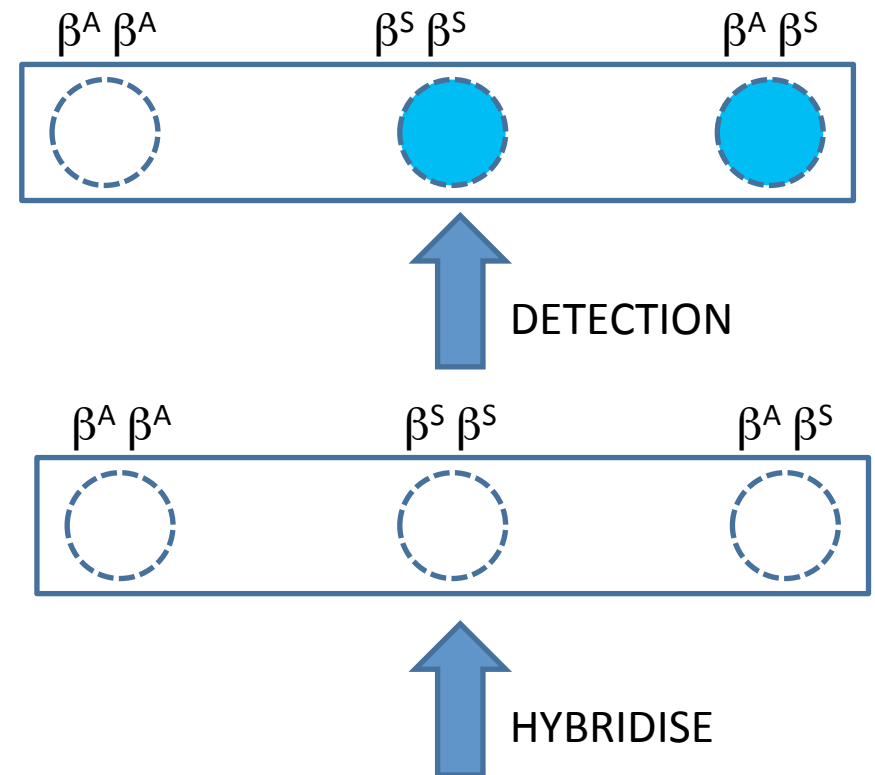


Hybridisation Technique

A. HYBRIDISATION WITH β^A PROBE



B. HYBRIDISATION WITH β^S PROBE



*ctgactcctgaggagaagtct β^A probe

*ctgactcctgtggagaagtct β^S probe

Further Reading

- Wikipedia 'Allele specific oligonucleotide' article. Available:
http://en.wikipedia.org/wiki/Allele-specific_oligonucleotide
- Wu et al (1989) Allele-specific enzymatic amplification of beta-globin genomic DNA for diagnosis of sickle cell anemia. Available:
<http://www.ncbi.nlm.nih.gov/pmc/articles/PMC286997/>